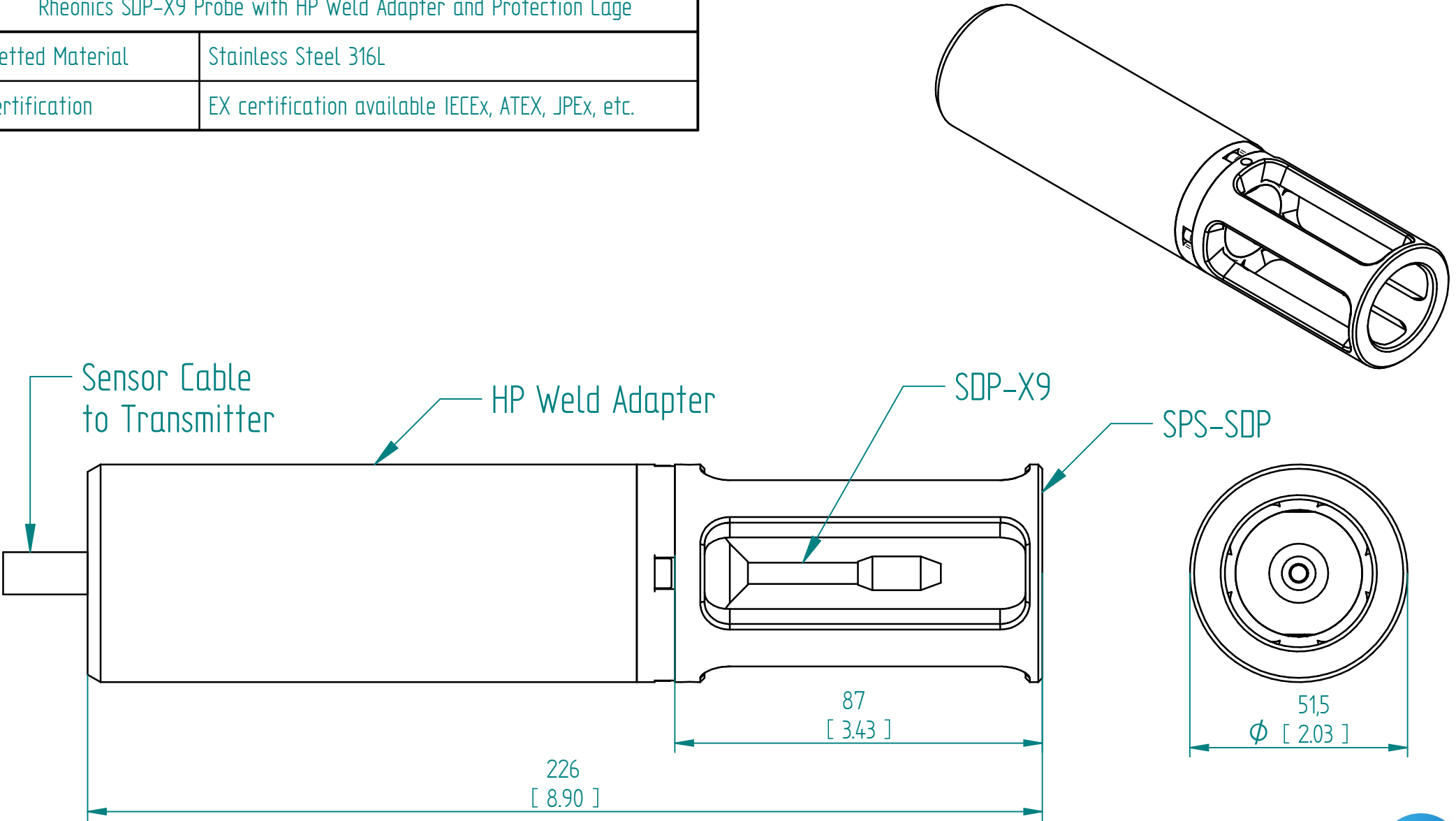


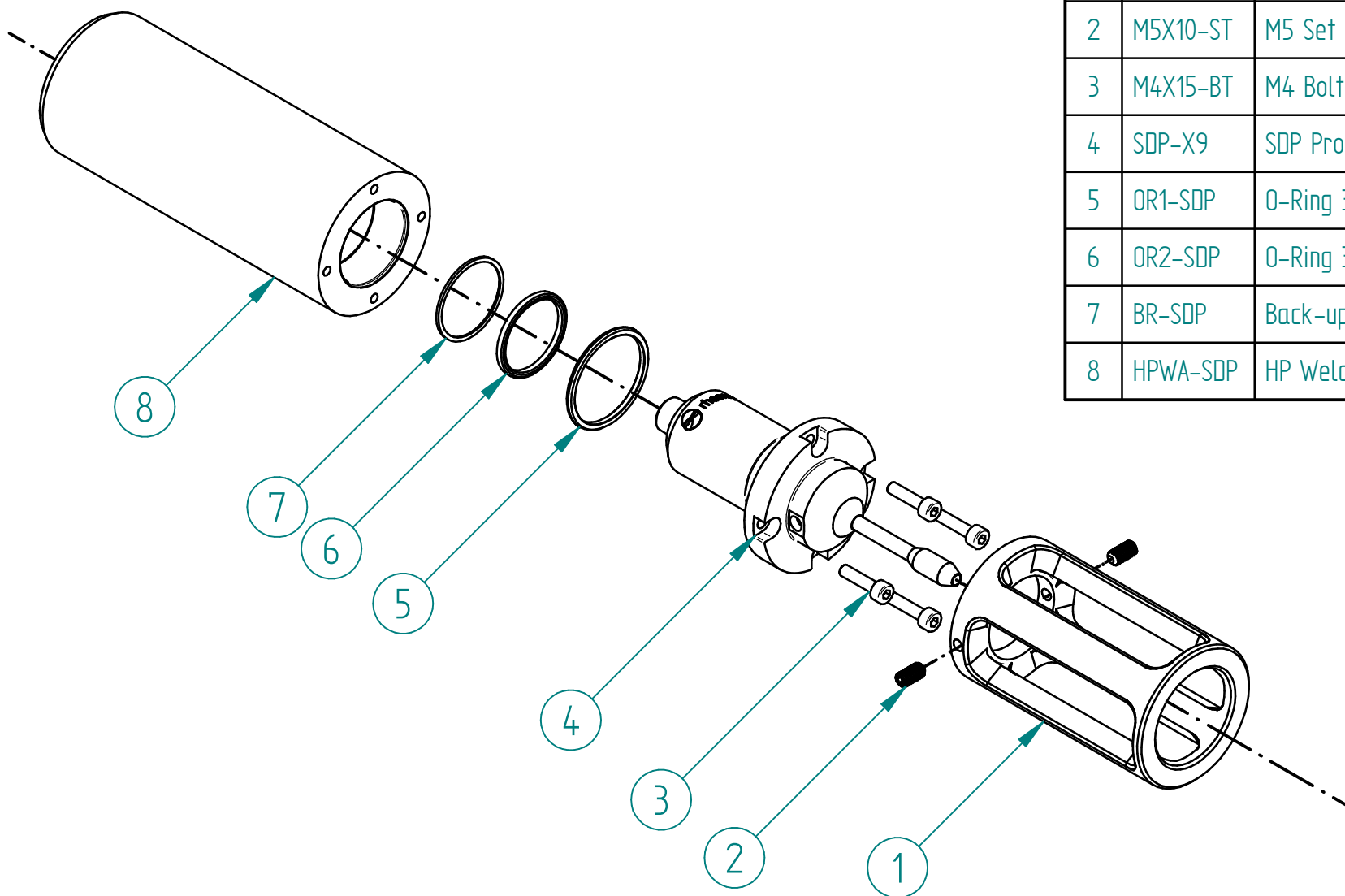
Rheonics SDP-X9 Probe with HP Weld Adapter and Protection Cage	
Wetted Material	Stainless Steel 316L
Certification	EX certification available IECEx, ATEX, JPEX, etc.



Rheonics Sand Detector
SDP-X9 Assembly

This drawing remains property of rheonics. It may be neither copied nor informed to third persons or competitors without our approval. (2 paragraph 1 fig.7 copyright act of 9th Sept. 1965)

Protected by US and International patents granted and pending



N°	Code	Description	Qty.
1	SPS-SDP	Protection Sleeve SDP	1
2	M5X10-ST	M5 Set Screw	2
3	M4X15-BT	M4 Bolt	4
4	SDP-X9	SDP Probe	1
5	OR1-SDP	O-Ring 32x2.5 - 90 shore - FKM	1
6	OR2-SDP	O-Ring 30x2 - 90 shore - FKM	1
7	BR-SDP	Back-up Ring - 30x2 - PTFE	1
8	HPWA-SDP	HP Weld Adapter for SDP	1

Rheonics Sand Detector Exploded View

This drawing remains property of rheonics. It may be neither copied nor informed to third persons or competitors without our approval. (2 paragraph 1 fig.7 copyright act of 9th Sept. 1965)

Protected by US and International patents granted and pending

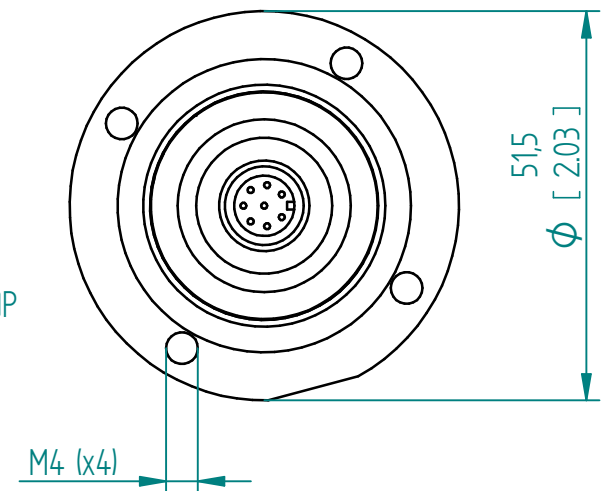
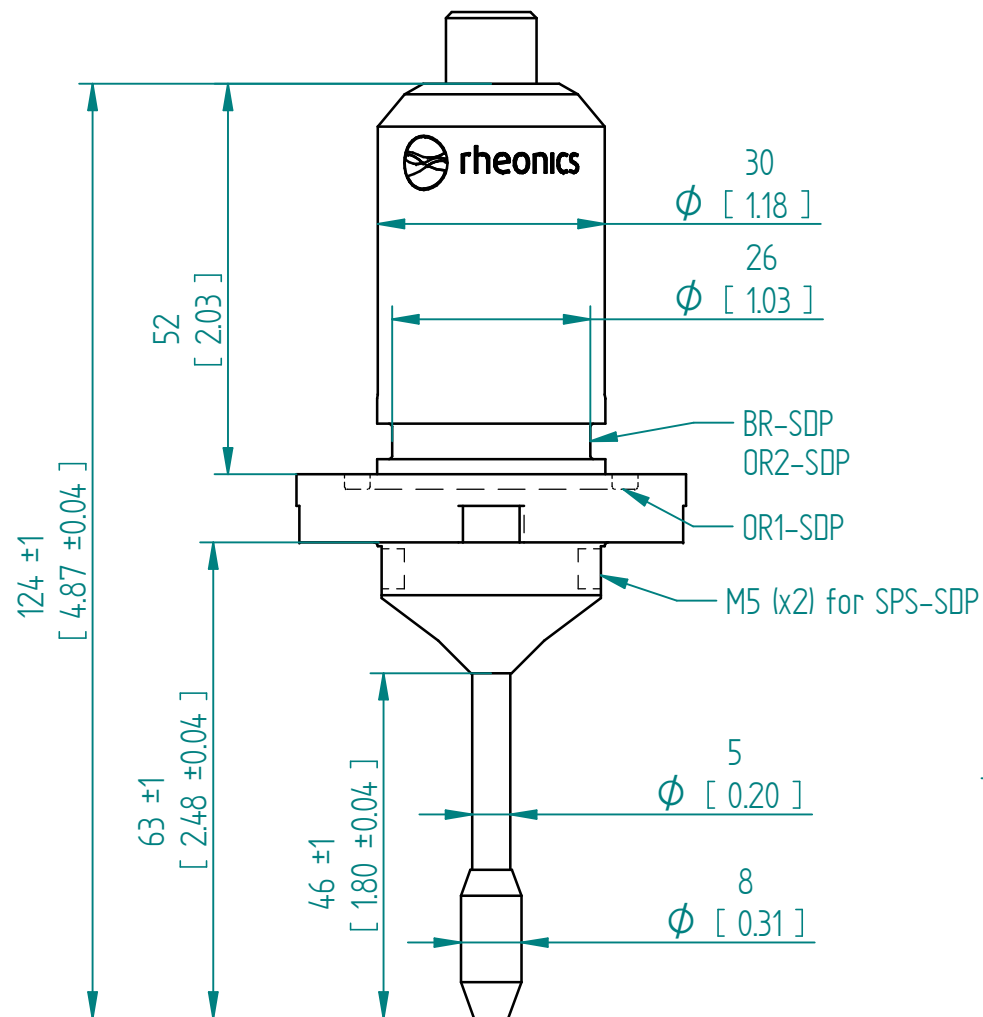
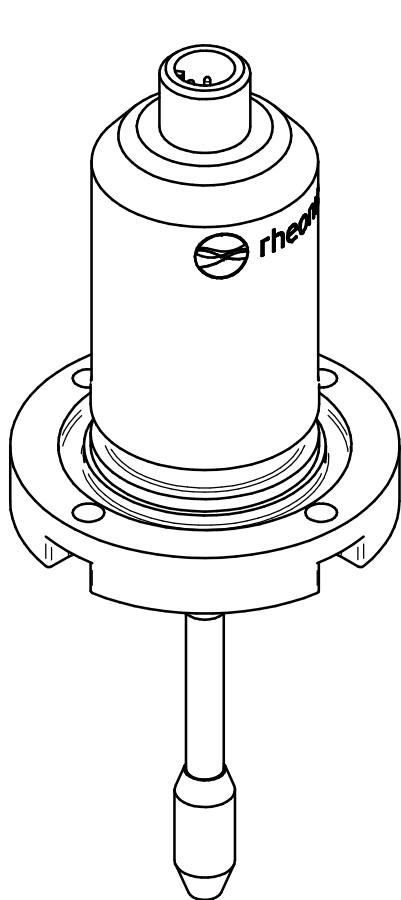
rheonics • Switzerland • USA • www.rheonics.com • info@rheonics.com +41 52 511 32 00 +1 713 364 5427

Release:2503

rheonics



inline process
density and viscosity
monitoring



Rheonics Sand Detector SDP-X9 Probe

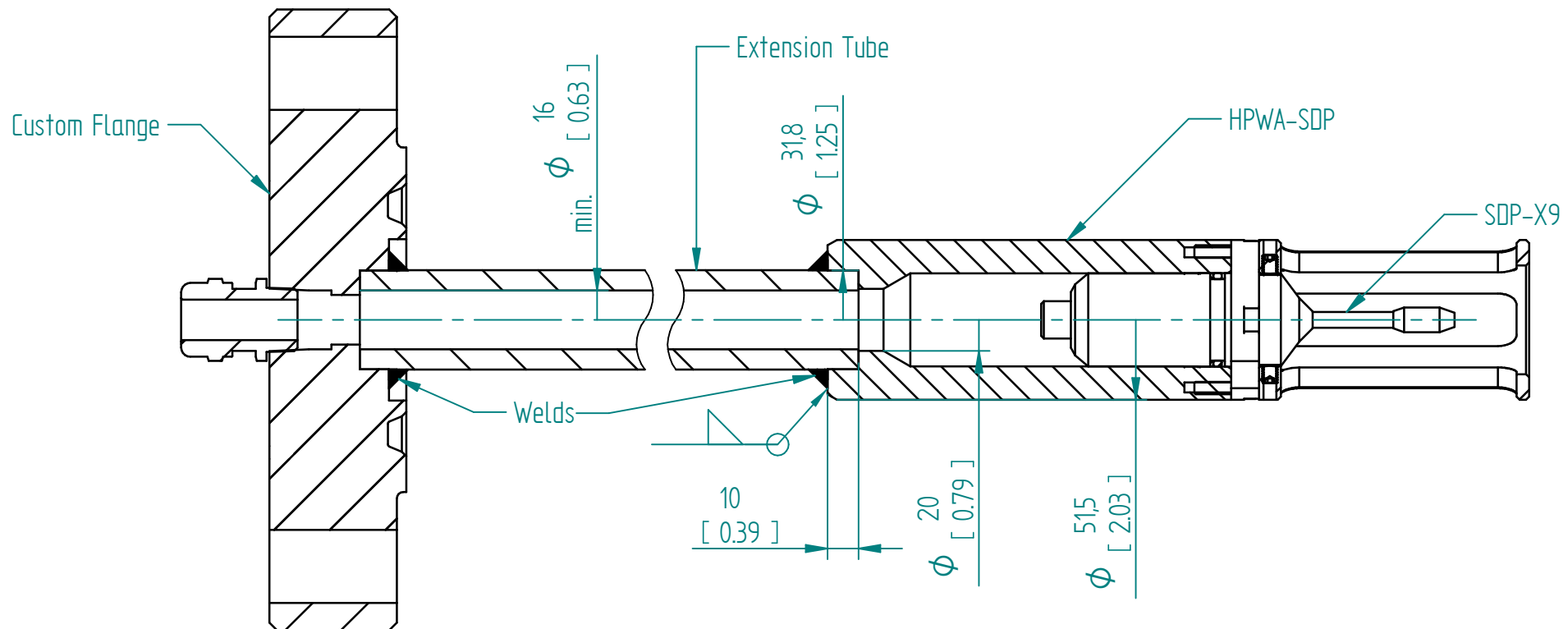
This drawing remains property of rheonics. It may be neither copied nor informed to third persons or competitors without our approval. (2 paragraph 1 fig.7 copyright act of 9th Sept. 1965)

Weld instructions:

1. Weld an extension tube (ID 16mm for EX cable) to the SRD Weld Adapter (HPWA-SDP). Tube should be rated for desired pressure. Use Interface drawing below for tube dimensions.

Assembly instructions:

1. Connect the sensor cable to the SDP-X9 probe back M12 connector
2. Pass the cable through the HP Weld Adapter (HPWA-SDP) and Extension Tube
3. Place the 2 O-Rings (OR1-SDP, OR2-SDP) and Back-up Ring (BR-SDP) on the probe
4. Place and fix the SDP-X9 probe on the HP Weld Adapter using the 4 M4 bolts (M4X15-BT)
6. Use the probe protection sleeve (SPS-SDP) to avoid damaging sensing element, fix the sleeve with the 2 M5 screws (M5X10-ST)



Rheonics Sand Detector Welding and Assembly

This drawing remains property of rheonics. It may be neither copied nor informed to third persons or competitors without our approval. (2 paragraph 1 fig.7 copyright act of 9th Sept. 1965)

Protected by US and International patents granted and pending

rheonics • Switzerland • USA • www.rheonics.com • info@rheonics.com +41 52 511 32 00 +1 713 364 5427

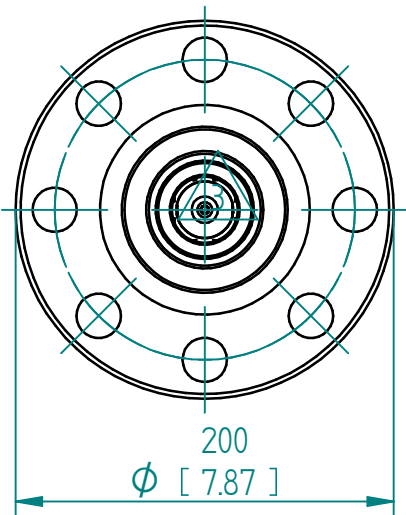
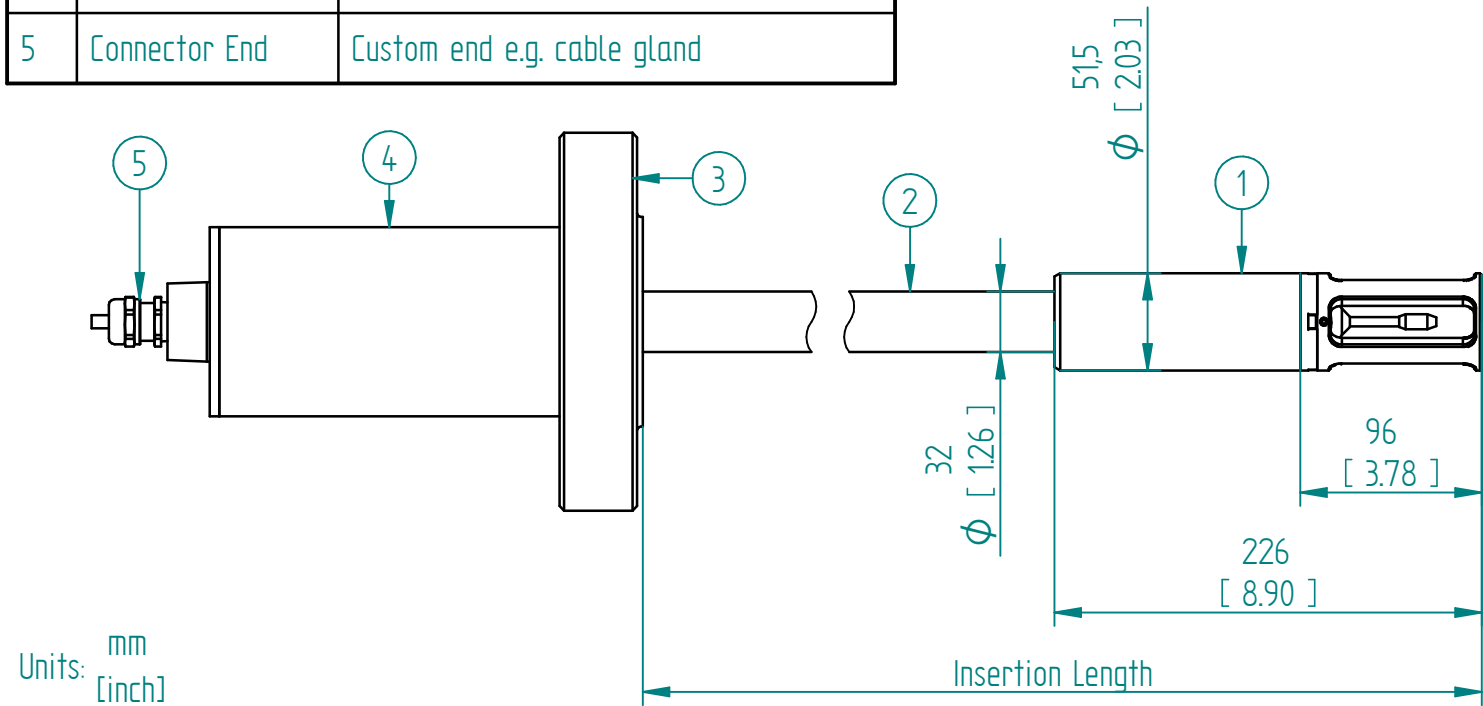
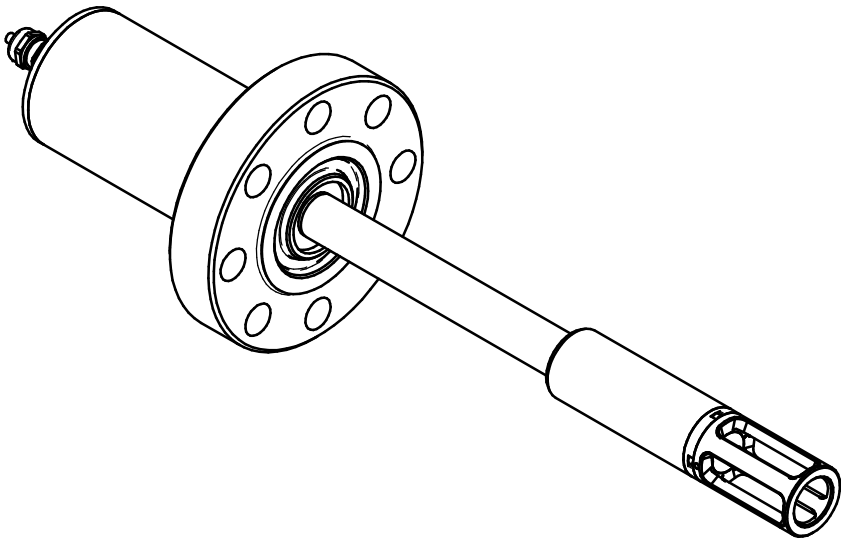
Release:2503

rheonics



inline process
density and viscosity
monitoring

Custom Assembly Example for Rheonics SDP		
N°	Part	Notes
1	Rheonics SDP	Supplied by Rheonics
2	Extension Tube	Custom variable ID/OD and length Material compatible for welding or other connection method to HPWA-SDP
3	Custom Flange	Custom norm, size, PN Material compatible for welding or other connection method to HPWA-SDP
4	Connector Cover	Custom protection for cable connection
5	Connector End	Custom end e.g. cable gland



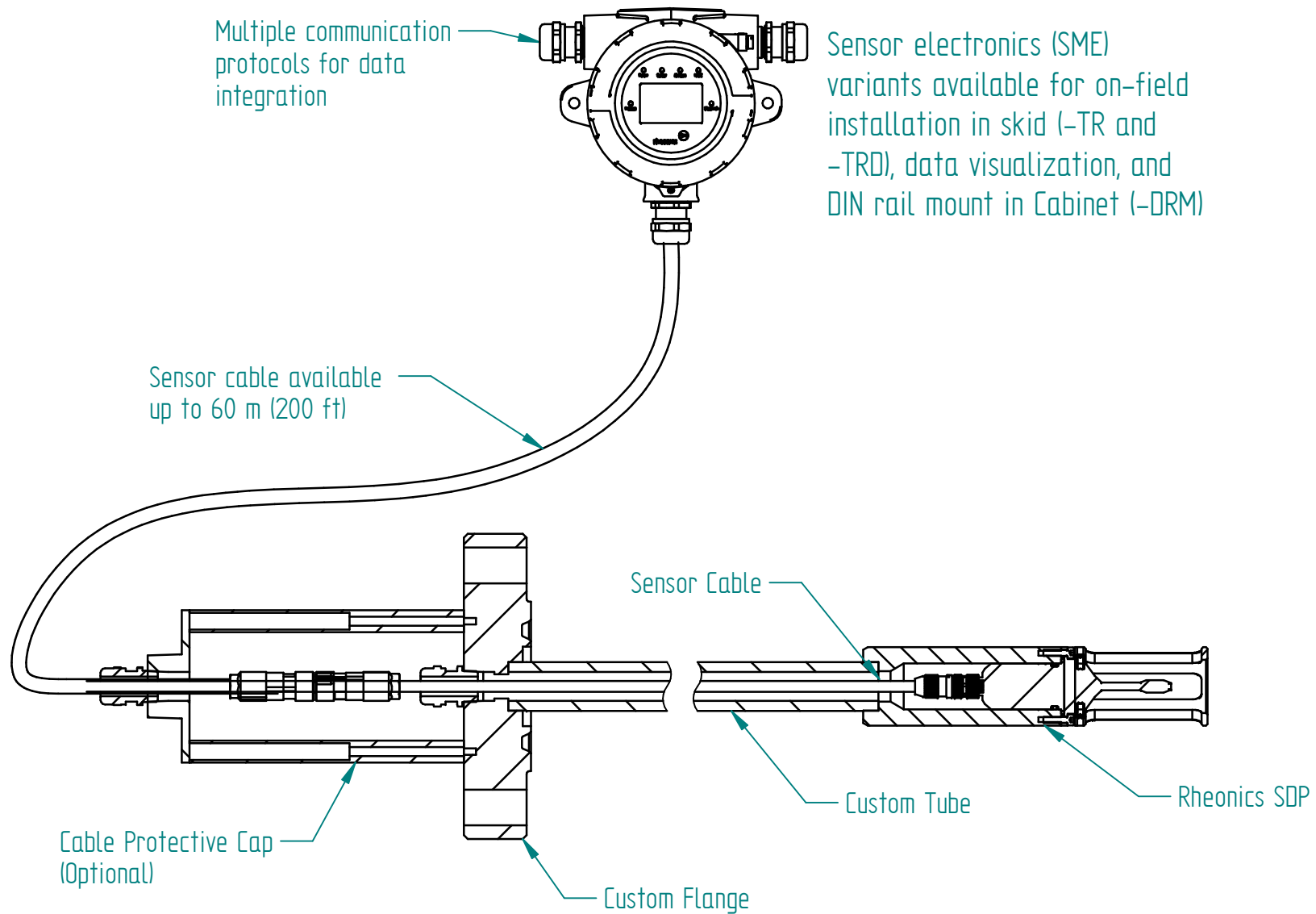
rheonics

inline process
density and viscosity
monitoring

Rheonics Sand Detector SDP Custom Assembly Example

This drawing remains property of rheonics. It may be neither copied nor informed to third persons or competitors without our approval. (2 paragraph 1 fig.7 copyright act of 9th Sept. 1965)

Protected by US and International patents granted and pending



Rheonics Sand Detector Assembly Details

This drawing remains property of rheonics. It may be neither copied nor informed to third persons or competitors without our approval. (2 paragraph 1 fig.7 copyright act of 9th Sept. 1965)

Protected by US and International patents granted and pending

rheonics • Switzerland • USA • www.rheonics.com • info@rheonics.com +41 52 511 32 00 +1 713 364 5427

Release:2503

rheonics



inline process
density and viscosity
monitoring