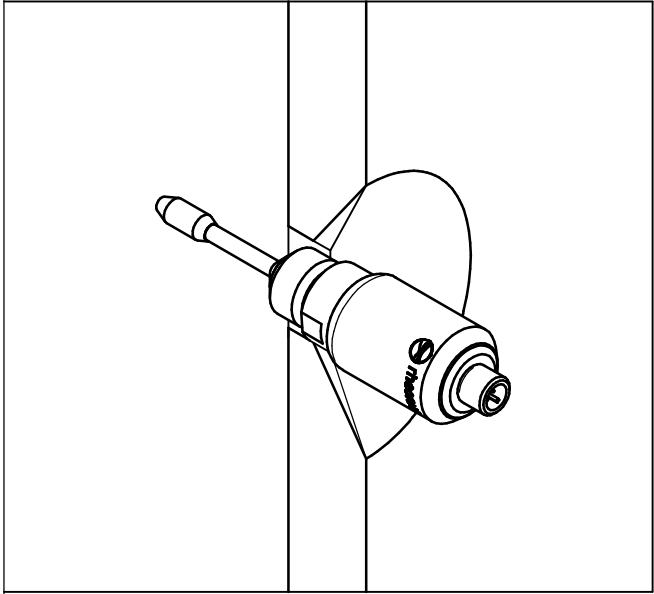
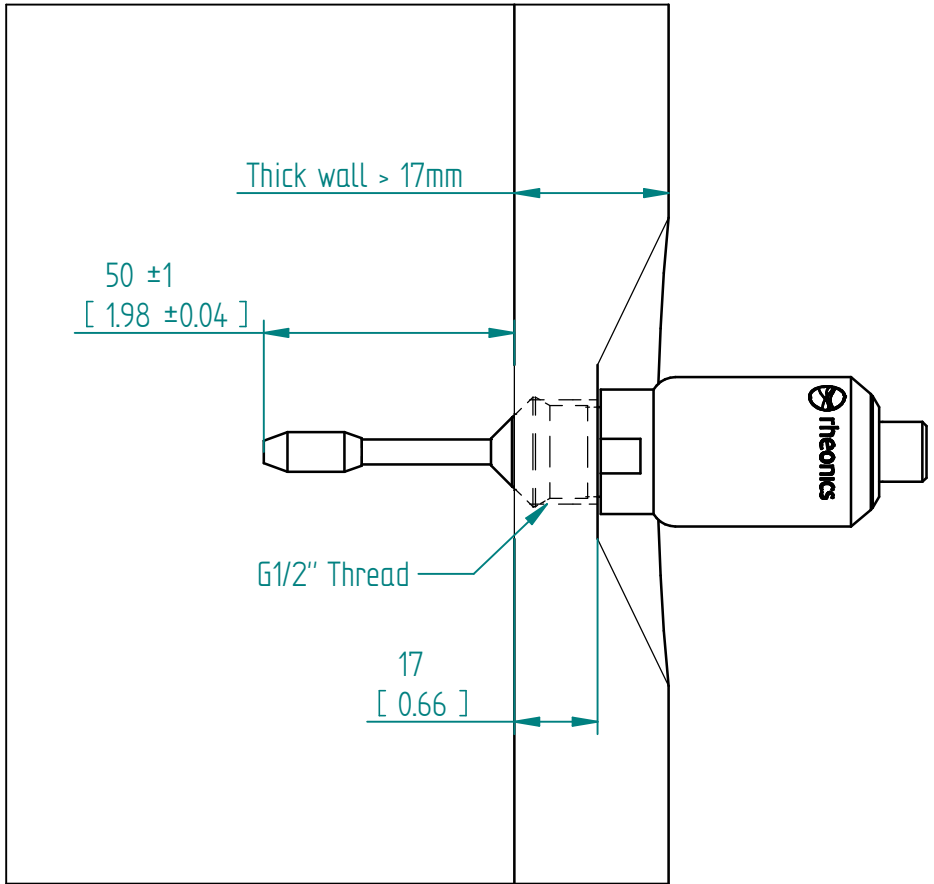


SRV Installation	
Sensor code	SRV-X1-12G
Connection	1/2" G Thread



Units: mm
[inch]

Rheonics SRV 1/2" G Thread Thick wall interface definition

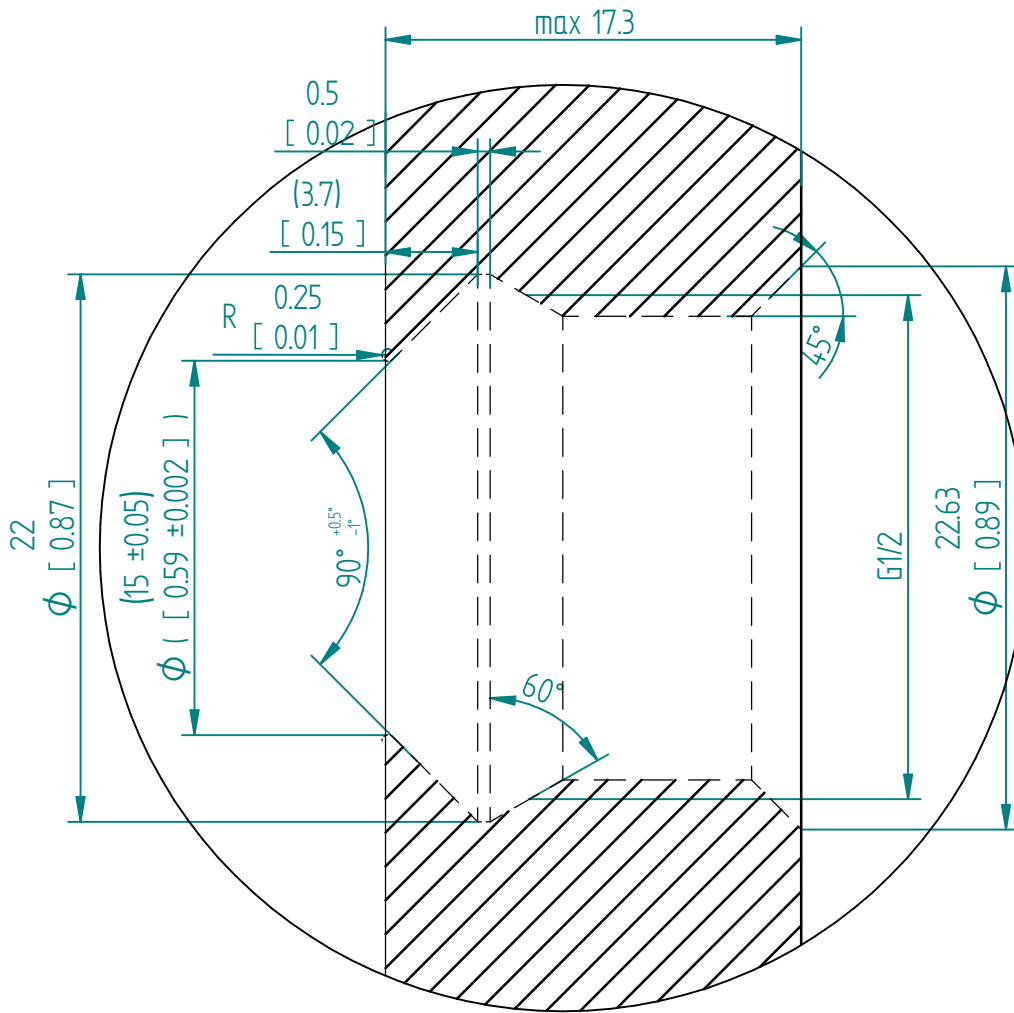
This drawing remains property of rheonics. It may be neither copied nor informed to third persons or competitors without our approval. (2 paragraph 1 fig.7 copyright act of 9th Sept. 1965)

Protected by US and International patents granted and pending

rheonics • Switzerland • USA • www.rheonics.com • info@rheonics.com +41 52 511 32 00 +1 713 364 5427

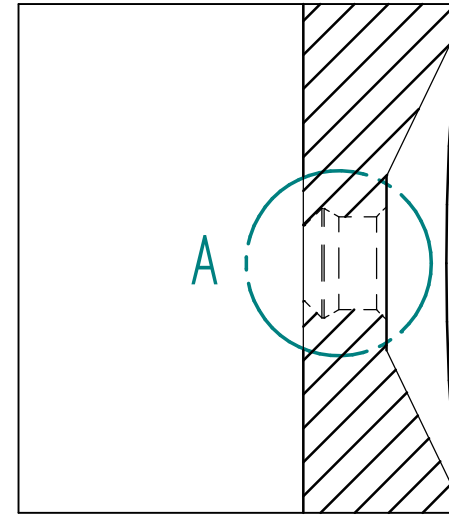
Release: 2309





SECTION A

Units: mm
[inch]



Customers using this drawing to design their seal should ensure that they can keep and maintain the tolerances.

The drawing is only provided as a guide and it is the customer's responsibility to design the sealing fit for their needs.

Use of these drawings is at user's own risk and user accepts that, by using this drawing, they agree to not hold Rheonics responsible or liable.

Alternatively, use Rheonics HAW weldolets.

Internal definition - Dimensions and tolerance for conical sealing

General tolerance ISO 2768 - fH

This drawing remains property of rheonics. It may be neither copied nor informed to third persons or competitors without our approval. (2 paragraph 1 fig.7 copyright act of 9th Sept. 1965)

Protected by US and International patents granted and pending

rheonics • Switzerland • USA • www.rheonics.com • info@rheonics.com +41 52 511 32 00 +1 713 364 5427

Release: 2309

rheonics



inline process
density and viscosity
monitoring