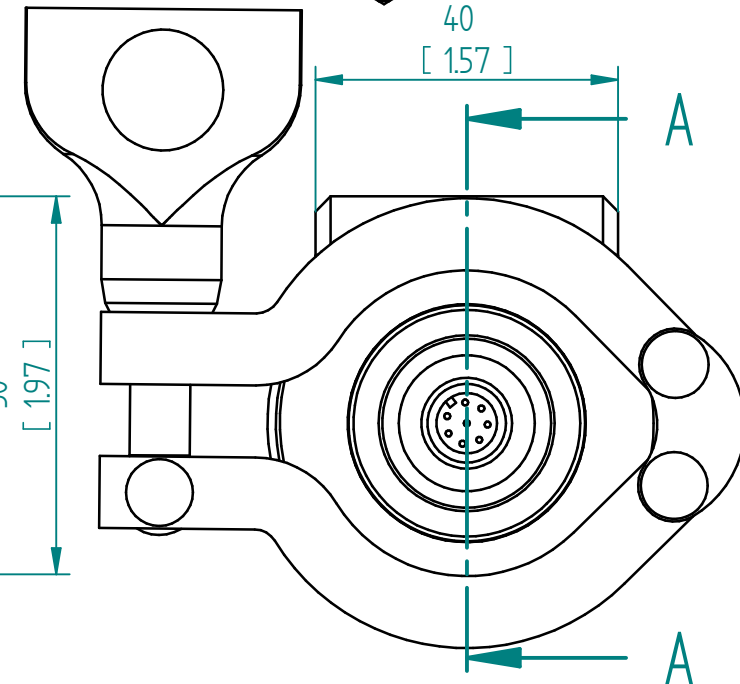
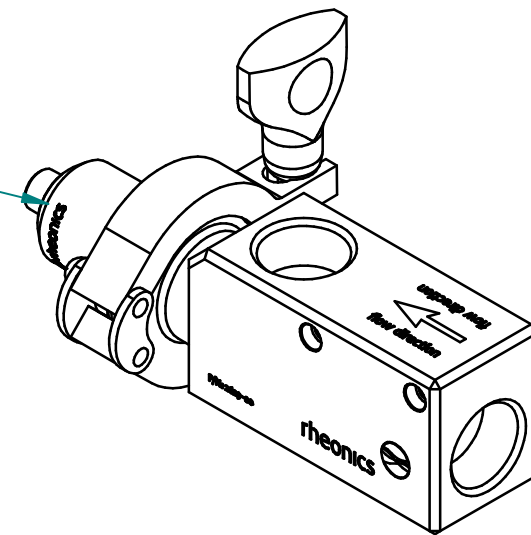


Pressure rating	200 bar (2900 psi)
Material	316L
Fluid volume	60 ml

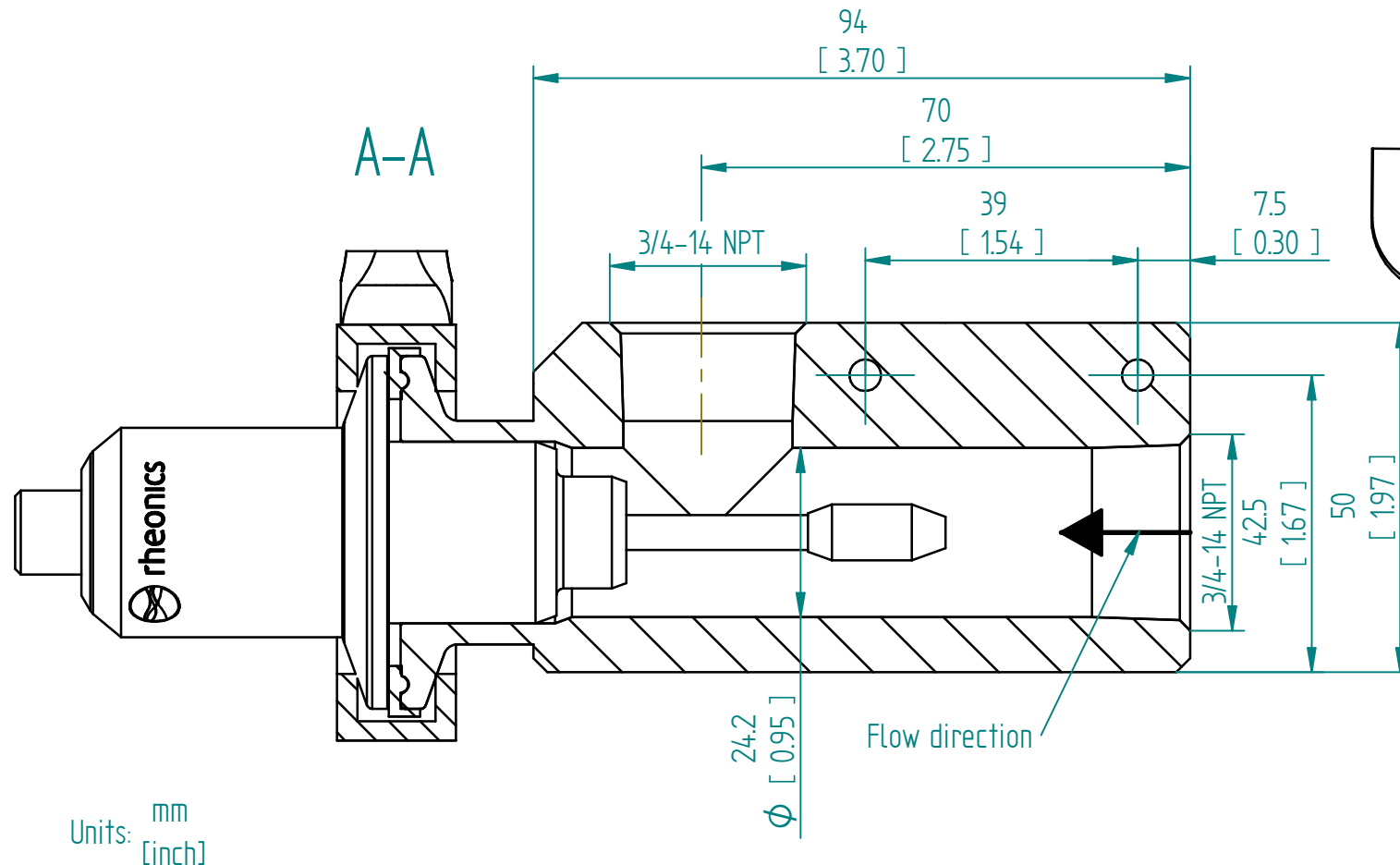
Only to be used with correct pressure rating on the SRV sensor and process connection.

SRV with 1.5" TriClamp (DN40) Process Connection



rheonics

inline process
density and viscosity
monitoring



SRV 1.5" TC Inline Flow Cell IFC-15T-34N-SRV

This drawing remains property of rheonics. It may be neither copied nor informed to third persons or competitors without our approval. (2 paragraph 1 fig.7 copyright act of 9th Sept. 1965)

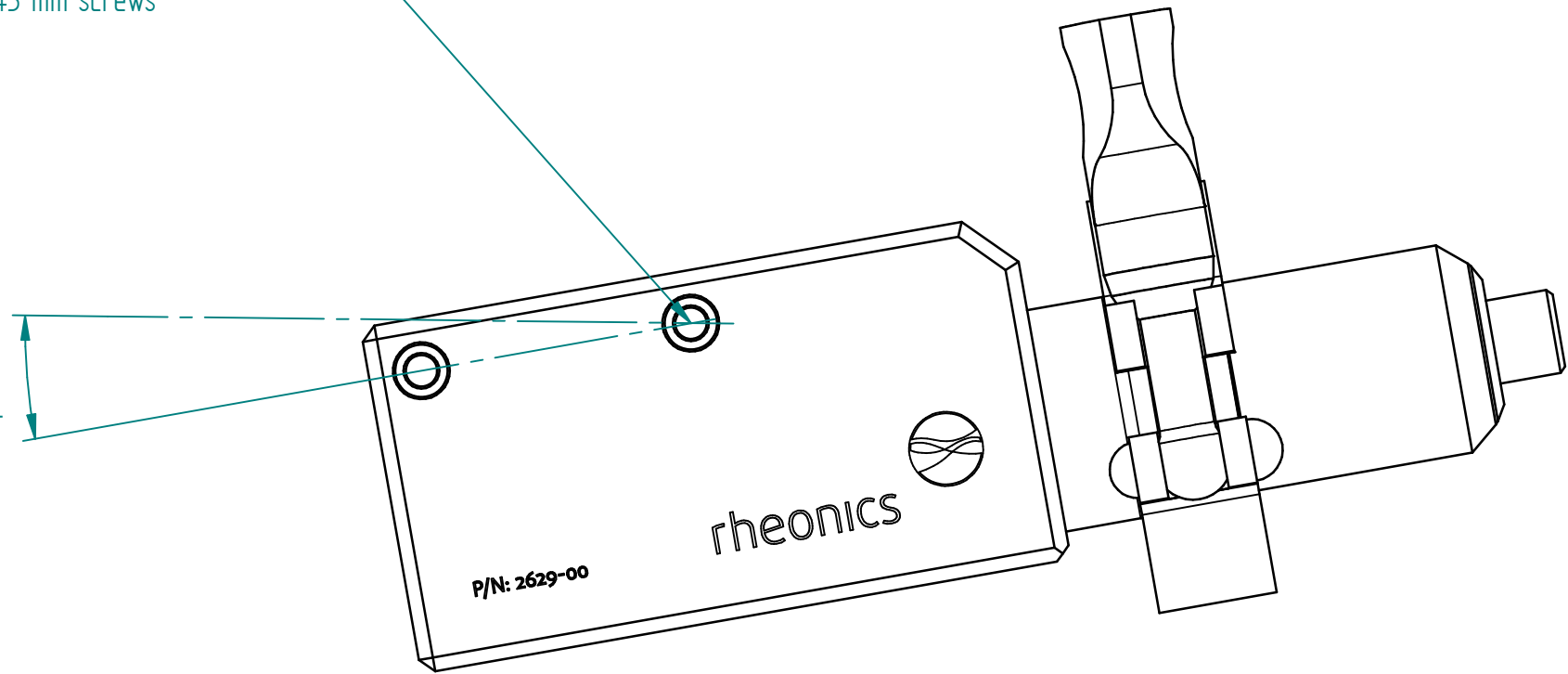
Protected by US and International patents granted and pending

rheonics • Switzerland • USA • www.rheonics.com • info@rheonics.com +41 52 511 32 00 +1 713 364 5427

Release: 2303

For mounting use
- 8-32 x 1 3/4 in. screws or with
- M4 x 45 mm screws

For better cleanability,
mount adapter at an angle
as shown in the image to the right



Units: mm
[inch]

SRV 1.5" TC Inline Flow Cell IFC-15T-34N-SRV

This drawing remains property of rheonics. It may be neither copied nor informed to third persons or competitors without our approval. (2 paragraph 1 fig.7 copyright act of 9th Sept. 1965)

Protected by US and International patents granted and pending

rheonics • Switzerland • USA • www.rheonics.com • info@rheonics.com +41 52 511 32 00 +1 713 364 5427

Release: 2303

rheonics



inline process
density and viscosity
monitoring