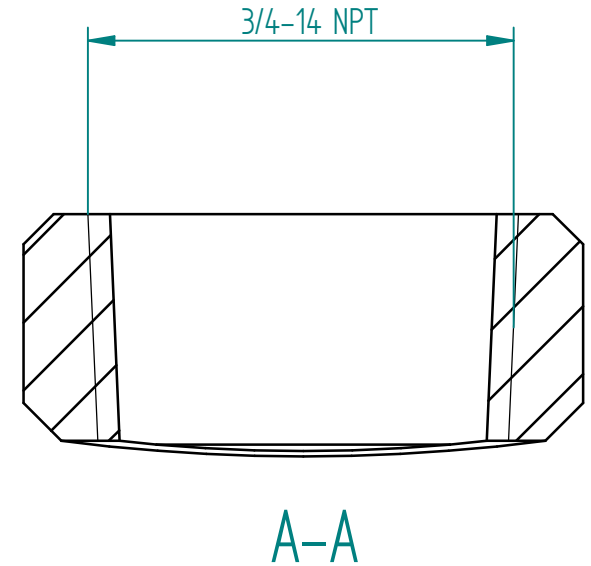
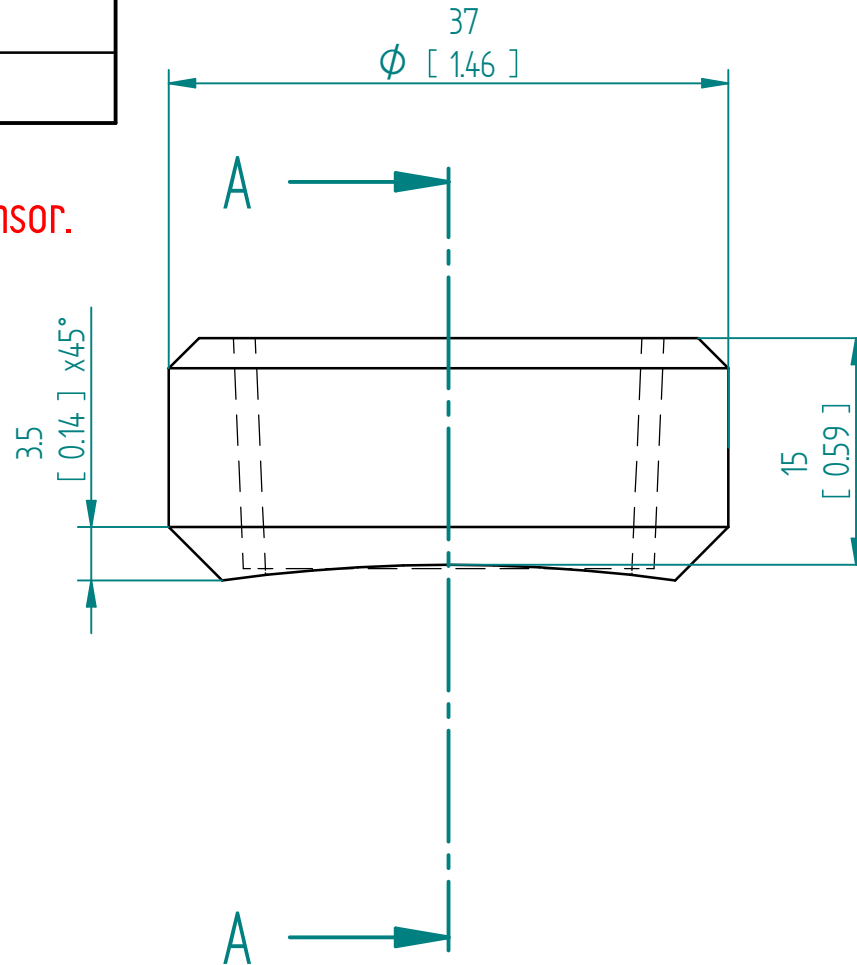
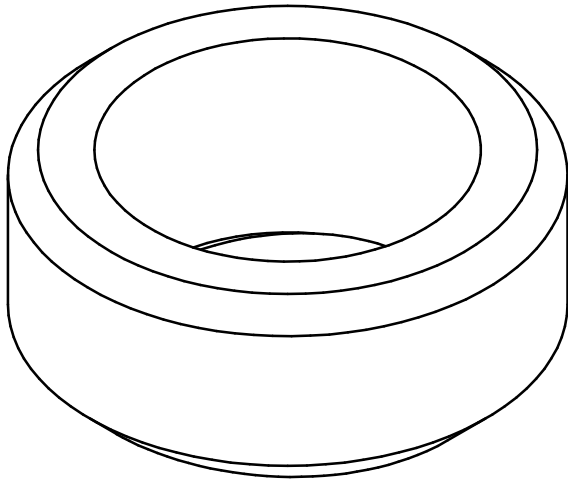


Pressure rating weldolet	500 bar (7500 psi)
Material	316L
Thread	NPT 3/4-14

Only to be used with correct pressure rating on the SRV/SRD sensor.



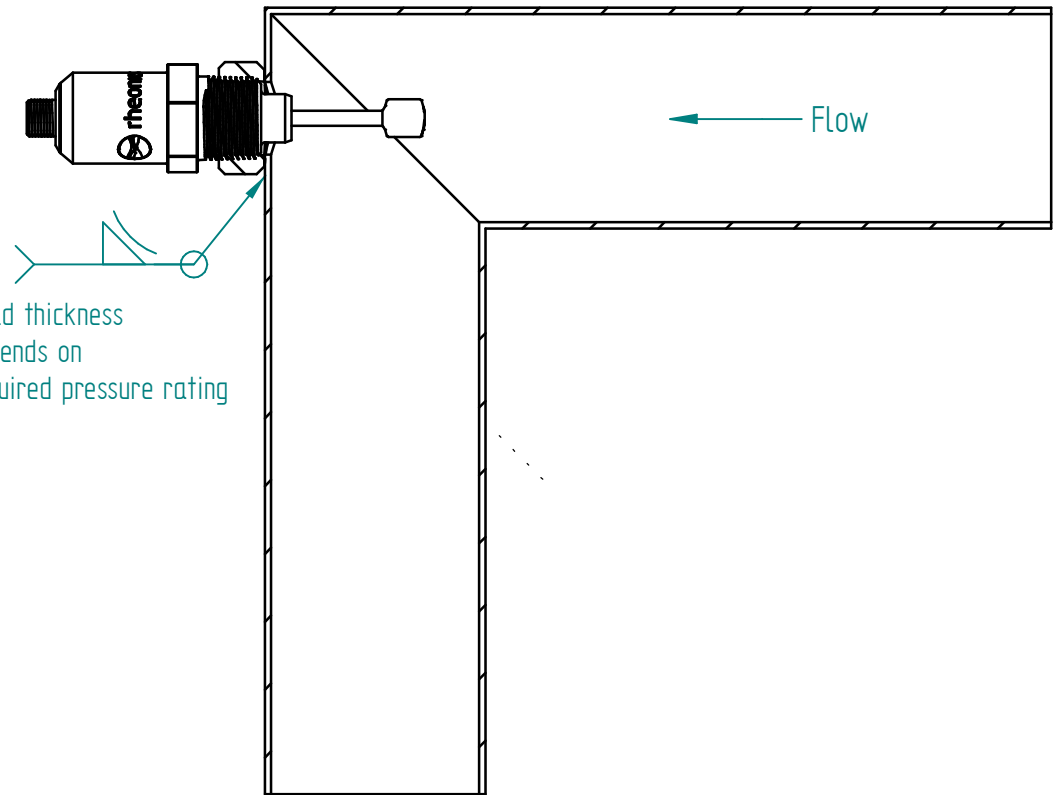
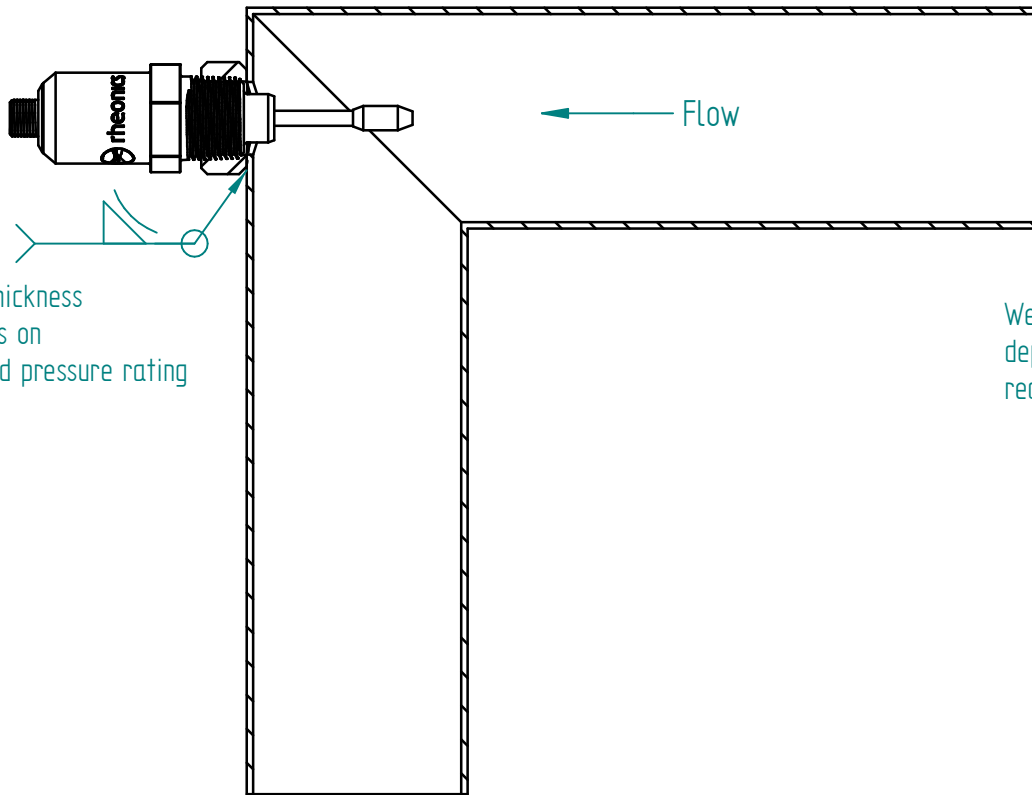
Units: mm  
 [inch]

## WOL-34NL Weldolet for pipes 2.5" and larger

This drawing remains property of rheonics. It may be neither copied nor informed to third persons or competitors without our approval. ( 2 paragraph 1 fig.7 copyright act of 9th Sept. 1965)

SRV-NPT

SRD-NPT



Units: mm  
[inch]

## Installation in right angled elbow - WOL-34NL

This drawing remains property of rheonics. It may be neither copied nor informed to third persons or competitors without our approval. ( 2 paragraph 1 fig.7 copyright act of 9th Sept. 1965)